

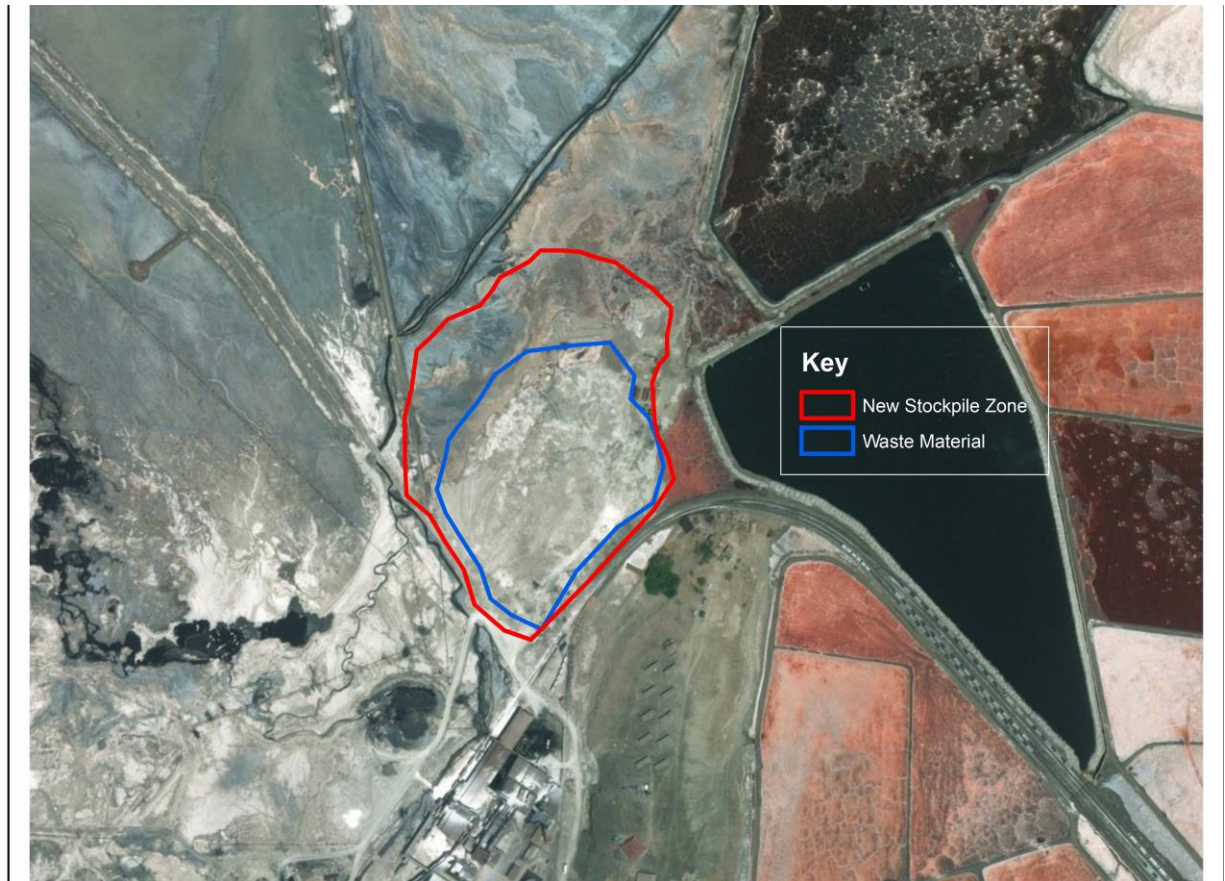
Raw Material Stockpile Zone

Create a zone for stock piling *Trona* and crushed refined soda.

Scope

1. Excavate waste material covering an area of 44,200 Sq. meters with a height of 4 meters.
2. Spread material to create a stockpile zone of area 78,850 Sq. meters with a height of 2 meters.
3. Total tonnage of waste to be moved is 282,900 tons.
4. The nature of material is extra fine soda ash mixed with other plant wastes.

See Below Satellite Imagery



N/B. See attached bill of quantities.